



315 Manchester Road, London, E14 3HN

**£425,000**





315 Manchester Road, London, E14 3HN

£425,000

Barrain London is pleased to present to the market this very spacious 2 double bedroom, 2 reception flat in Triangle Apartments. Located in Cubitt Town on Isle of Dogs just opposite the River Thames and scenic Thames Path, the open plan kitchen-reception is modern, stylish and well maintained, and features a large private balcony - great for relaxing in fresh air at home (and for entertaining, of course!) This property may also be configured as a 3 bedroom apartment.

Cubitt Town benefits from its close proximity to Canary Wharf, providing easy access to a very diverse array of dining, cultural, and shopping options. But in the neighbourhood there is a great scene, too, with numerous restaurants, pubs and theatres dotting the island (and an ASDA Superstore). Walk under the Thames through the pedestrian tunnel to Greenwich for a day out! In fact, on Isle of Dogs most things are easy walking distance or conveniently got to on the frequent bus service circling the island.

Whether you are a professional working in Canary Wharf, a family looking for well-heeled surroundings, or a buy-to-let investor, this flat is an appealing property that will hold its value due to its premium location.

Please call Barrain London to book your private viewing today.



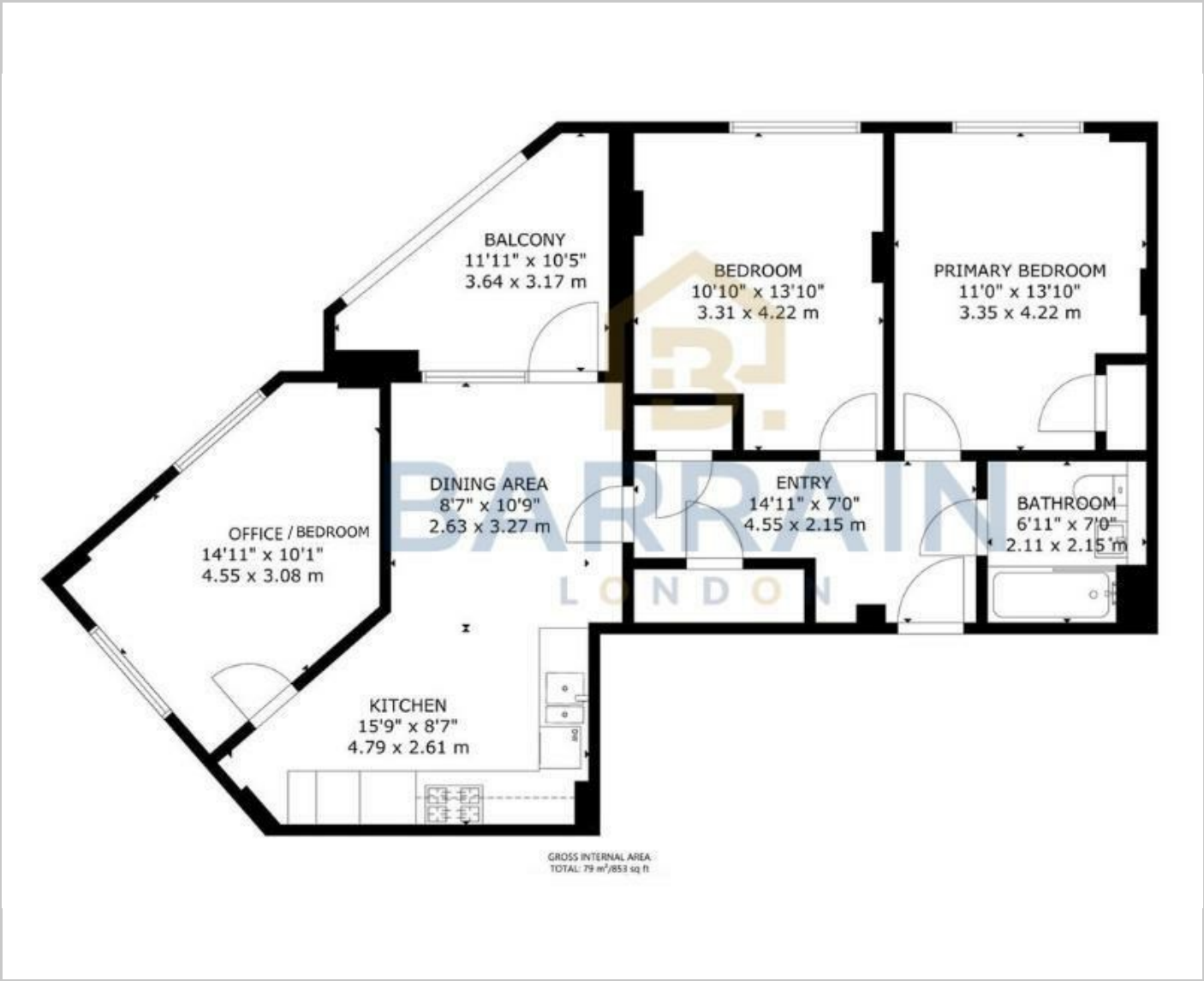
Description

Situation

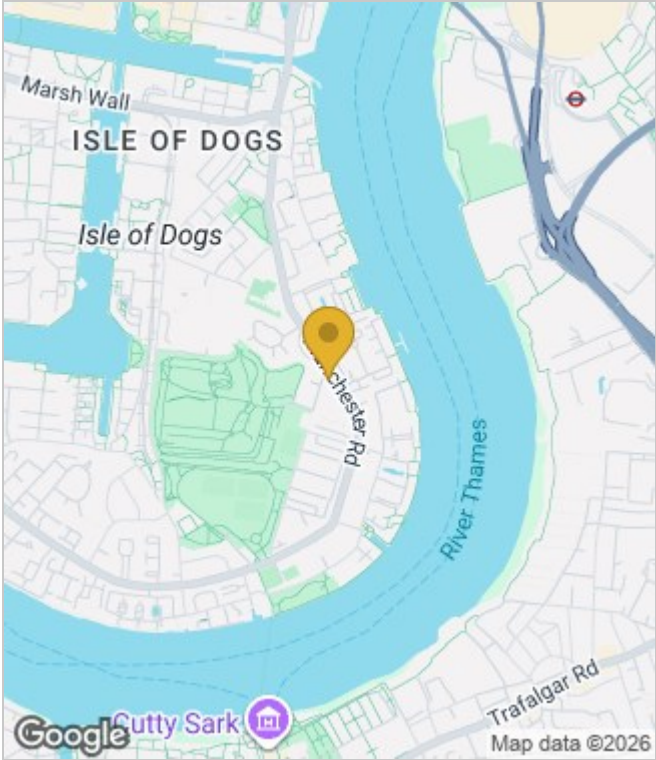
null  
Council Tax Band: E  
Available:



Floor Plans



Area Map



Energy Performance Graph



These particulars, whilst believed to be accurate are set out as a general outline only for guidance and do not constitute any part of an offer or contract. Intending purchasers should not rely on them as statements of representation of fact, but must satisfy themselves by inspection or otherwise as to their accuracy. No person in this firms employment has the authority to make or give any representation or warranty in respect of the property.